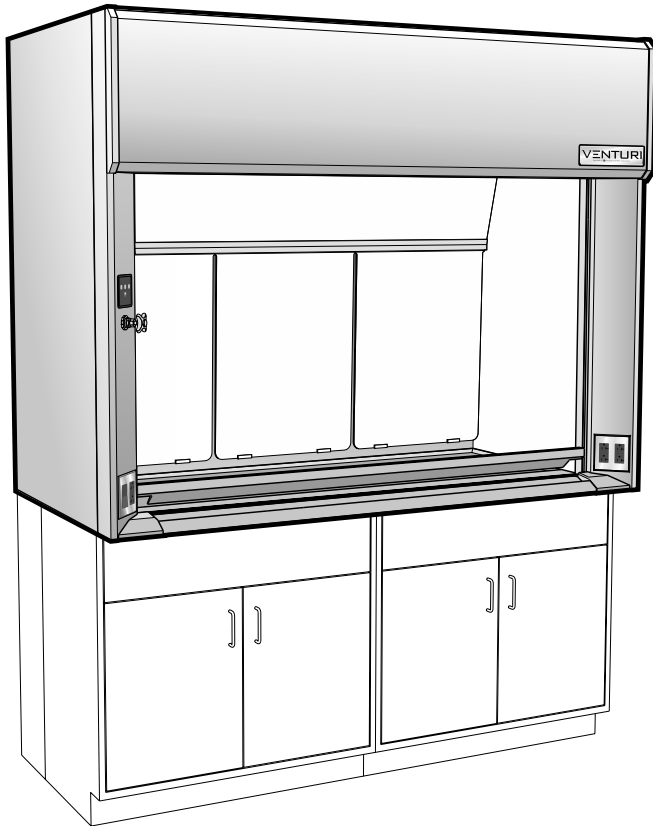


V45 – Perchloric Acid Bench Fume Hood

with Vertical Rising Sash



Accessories Included:

- 3 120 VAC 20 amp GFCI* protected duplex receptacles
** when wired to a single circuit, as standard with Option U*
- 1 Vapor proof light fixture with 120 VAC, 20 amp light switch
- 1 Electromechanical sash stop with push button override
- 1 Stainless steel work top with integral drain trough in rear.
- 1 Washdown fitting with hood interior washdown spray.

Available Sizes:

part no.
code

Sash Opening Height:
28 inches / 711mm **28**

Inside Depth:
24 inches / 610mm **24**

Overall Length:
48 inches / 1219mm **48**
60 inches / 1524mm **60**
72 inches / 1829mm **72**
96 inches / 2438mm **96**

Additional Parts Required for a Complete Fume Hood Assembly

| | |
|--------------------------|-------------|
| Ceiling Enclosure | see page 61 |
| Service Fittings | see page 62 |
| Base Cabinets | see page 66 |

Available Liner Types:

part no.
code

Type 316L Stainless Steel **L**
1805 UL Classified

Available Sash Frames:

part no.
code

Frameless **N**
Type 316L Stainless Steel **L**

Note: Acid storage and vacuum pump storage cabinets can not be vented through perchloric acid fume hood work tops.

| Sash Opening Height | Inside Depth | Overall Length | Liner Type | Sash Frame | Sash Glass | Fitting Holes | Electrical Fixture | Option Choices (separated by commas) |
|---------------------|--------------|----------------|------------|------------|------------|---------------|--------------------|--------------------------------------|
| V45F | 28 | 24 | L | - | - | F3 | - | , , , ... |

Technical Information

V45

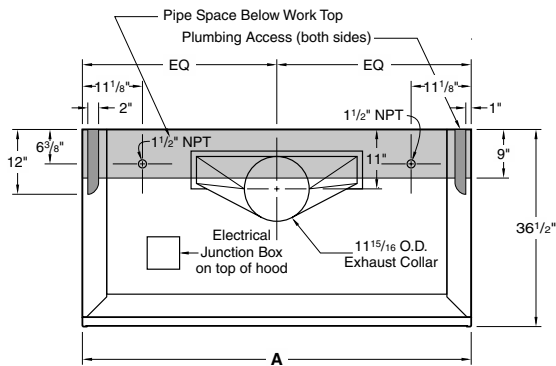
Airflow (CFM) Requirements

| Face Velocity | 28" High Sash Opening | | | | | | | | 18" High Sash Opening | | | | | | | |
|---------------|-----------------------|------|-----------------|------|-----------------|------|-----------------|------|-----------------------|------|-----------------|------|-----------------|------|-----------------|------|
| | 4'-0" / 48" | | 5'-0" / 60" | | 6'-0" / 72" | | 8'-0" / 96" | | 4'-0" / 48" | | 5'-0" / 60" | | 6'-0" / 72" | | 8'-0" / 96" | |
| | CFM | SP | CFM | SP | CFM | SP | CFM | SP | CFM | SP | CFM | SP | CFM | SP | CFM | SP |
| 120 FPM | 950 | 0.50 | 1240 | 0.65 | 1530 | 0.80 | 2110 | 0.55 | 620 | 0.25 | 810 | 0.30 | 1000 | 0.35 | 1380 | 0.25 |
| 100 FPM | 790 | 0.40 | 1030 | 0.50 | 1270 | 0.60 | 1750 | 0.45 | 510 | 0.20 | 670 | 0.25 | 830 | 0.30 | 1150 | 0.20 |
| 80 FPM | not recommended | | not recommended | | not recommended | | not recommended | | not recommended | | not recommended | | not recommended | | not recommended | |

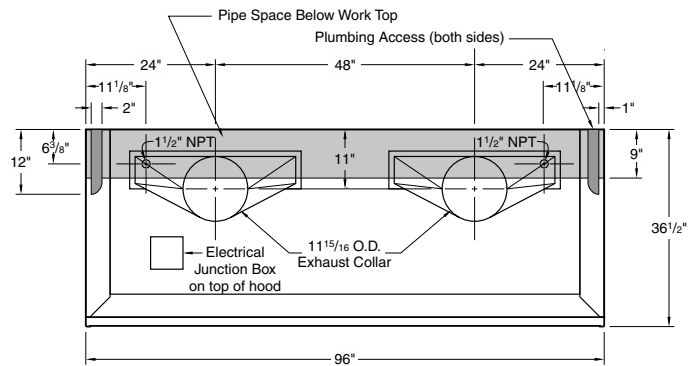
Static pressures shown are for the pressure drop through the hoods only. The total pressure drop through the hood and the duct system must be calculated to select the proper exhaust fan.

ANSI Z9.5 Minimum Flow Rate

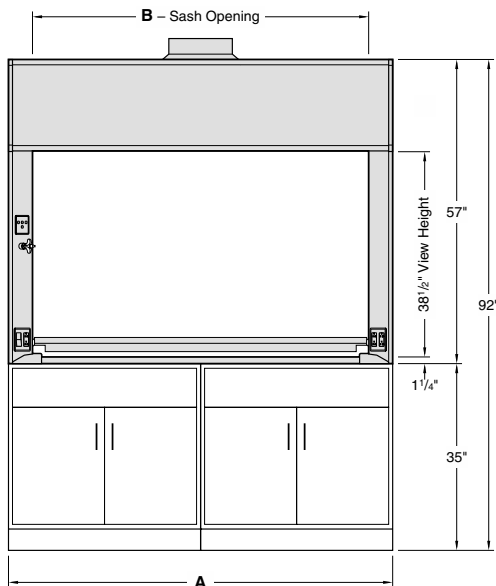
| Inside Depth | 150 Air Changes/Hour | | | | 375 Air Changes/Hour | | | |
|--------------|----------------------|-------------|-------------|-------------|----------------------|-------------|-------------|-------------|
| | 4'-0" / 48" | 5'-0" / 60" | 6'-0" / 72" | 8'-0" / 96" | 4'-0" / 48" | 5'-0" / 60" | 6'-0" / 72" | 8'-0" / 96" |
| 24" deep | 80 CFM | 100 CFM | 120 CFM | 170 CFM | 190 CFM | 240 CFM | 300 CFM | 410 CFM |



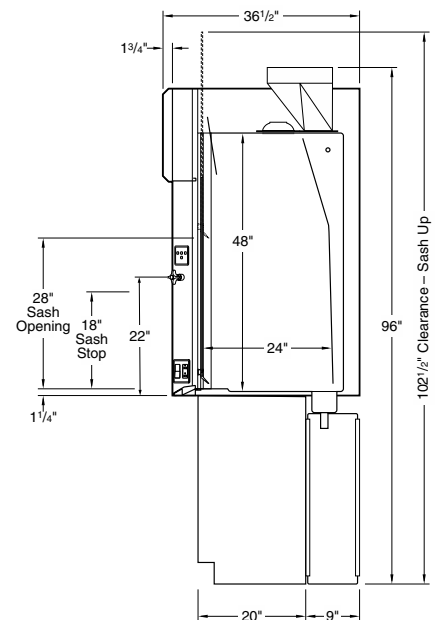
4'-5'-6' Rough-in



8' Rough-in



Elevation



Vertical Section

| Dimensions – Length | | | | |
|---------------------|-----|-----|-----|-----|
| A | 48" | 60" | 72" | 96" |
| B | 39" | 51" | 63" | 87" |